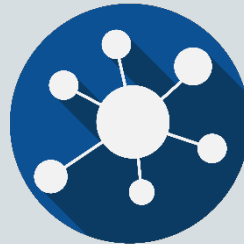




## INTRODUCTION TO THE WEBINARS: WHAT IS RD-CONNECT?



26/09/2018



# Rare diseases are difficult to study

2

research

diagnosis

clinical trials

healthcare  
provision



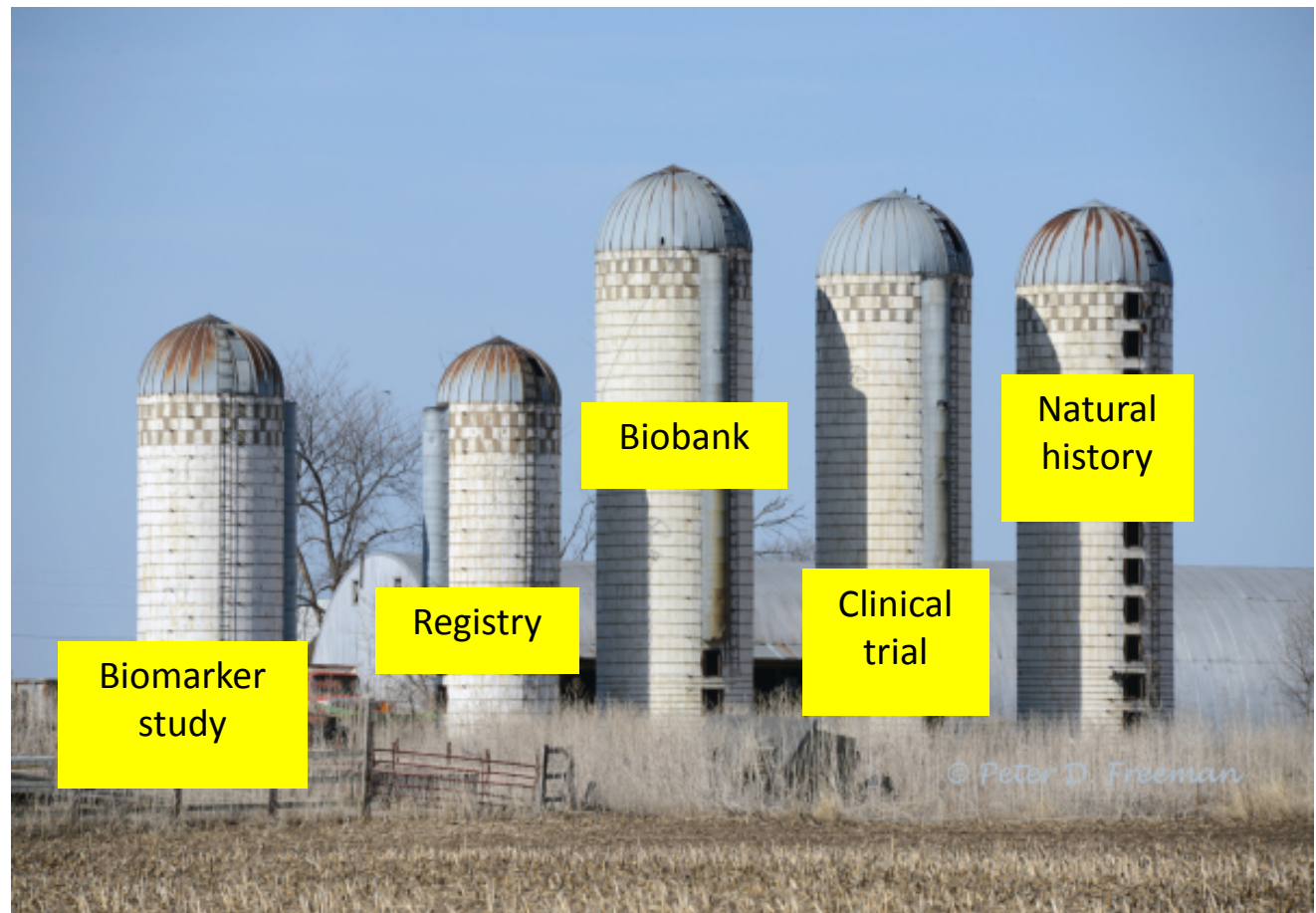


# RD-Connect guiding principle

3

## Overcoming silos

Currently, there is lots of data generated in rare disease research, which goes into several different resources, which for many reasons are not connected to each other.



© Peter D. Freeman



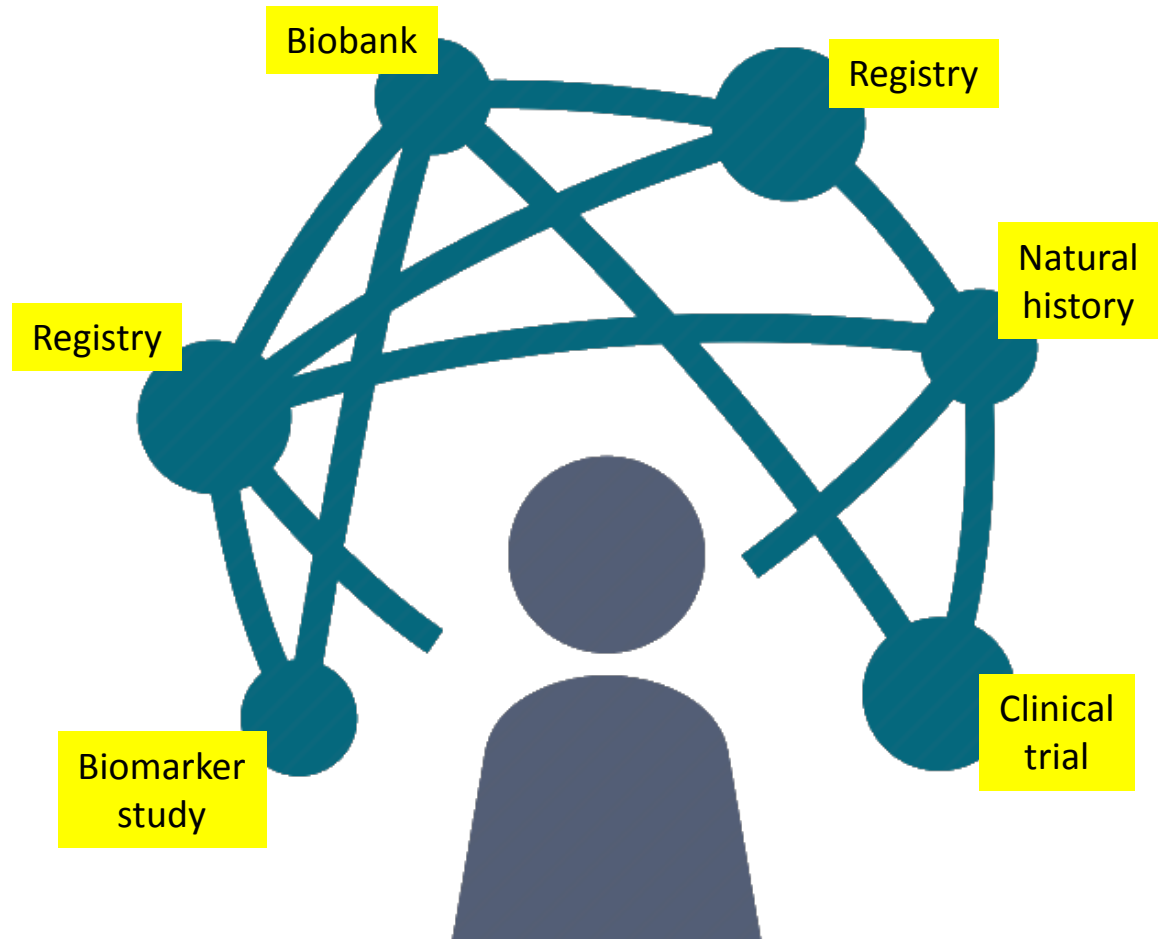
# RD-Connect guiding principle

4

## Overcoming silos



Data sharing for  
research and  
better data  
analysis.



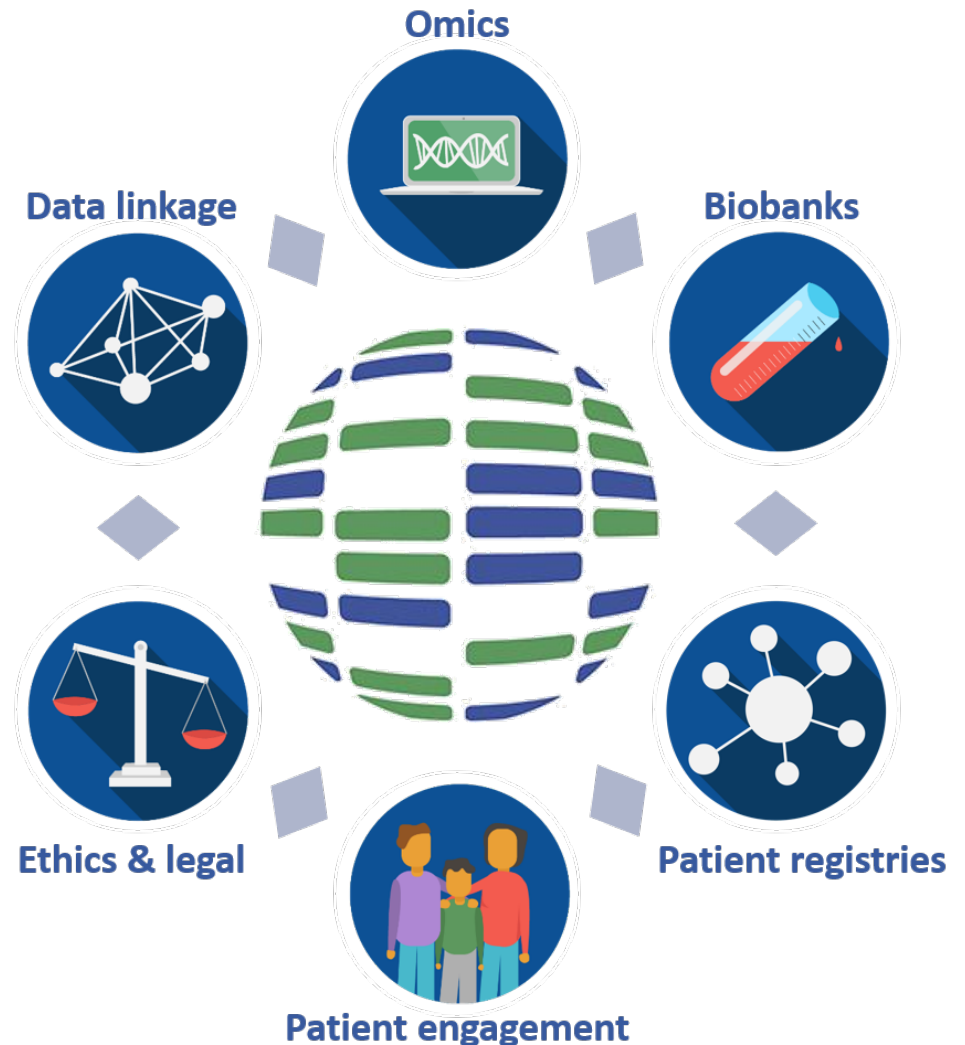


# RD-Connect facilitates data sharing

5



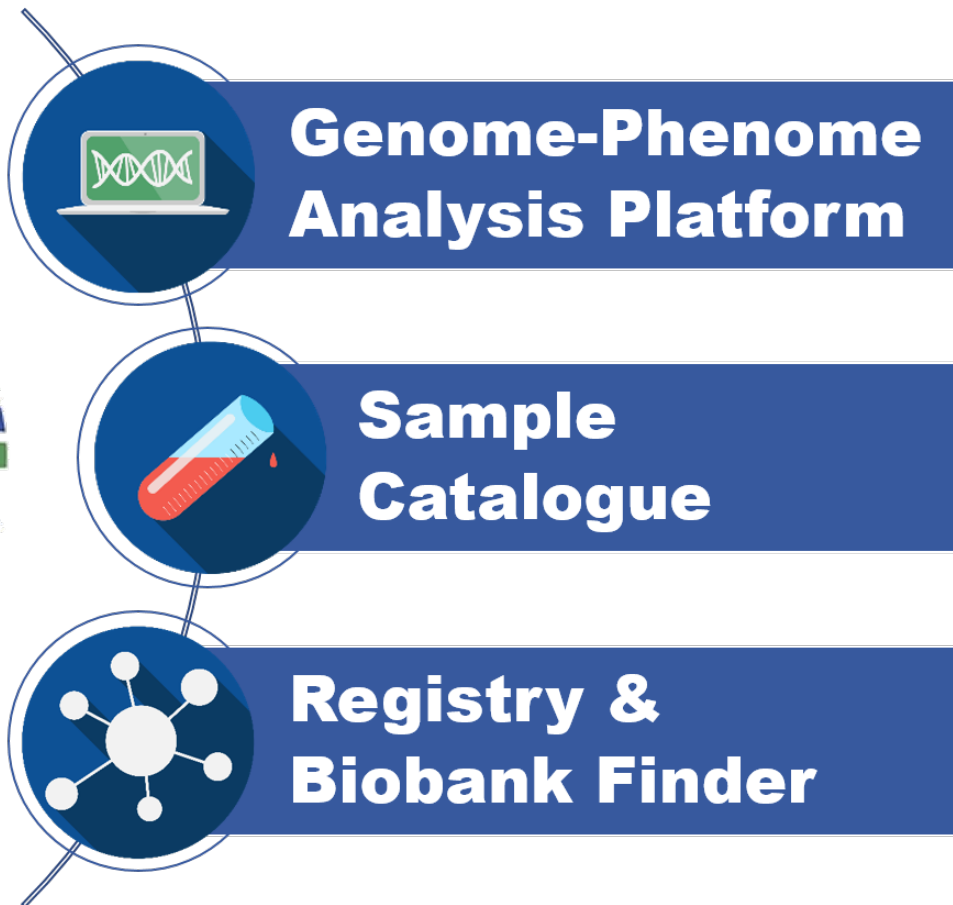
- EU project 2012-2018
- 32 partner organisations in the EU and beyond
- Sharing:
  - Genomic data
  - Phenotypic data
  - Patient registries information
  - Biosamples





# The RD-Connect platform

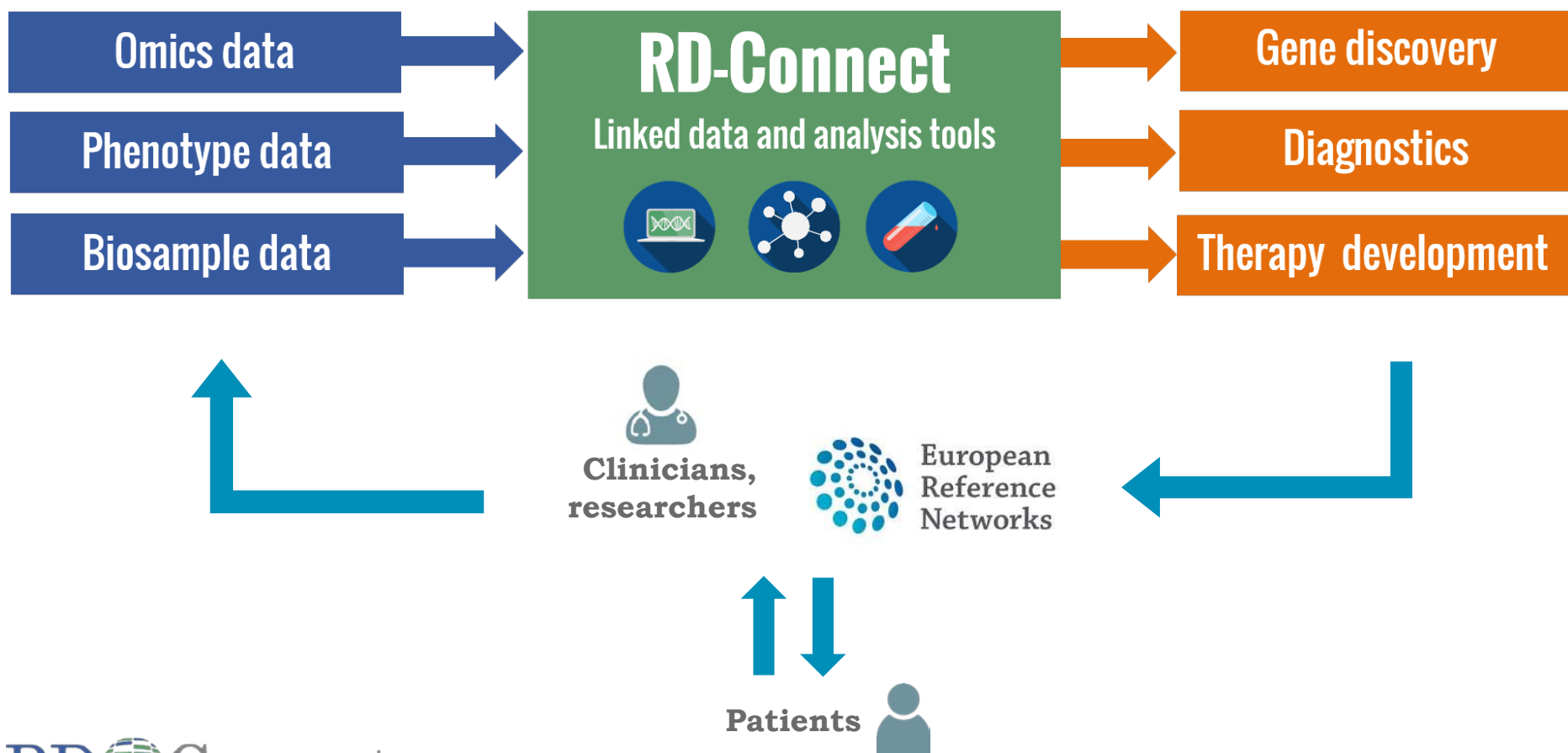
6





# Data in the RD-Connect platform

7







# Join the RD-Connect Community

8

- The RD-Connect Community is an international and interdisciplinary association aiming to accelerate rare disease research by promoting and facilitating data sharing.







RD  Connect

[rd-connect.eu](http://rd-connect.eu)

[info@rd-connect.eu](mailto:info@rd-connect.eu)



**IRDiRC**

INTERNATIONAL  
RARE DISEASES RESEARCH  
CONSORTIUM



European  
Reference  
Network



@ConnectRD



rdconnect



RD- Connect